



Test Report

Report No.: RKEYS250529118

Date: Jun. 16, 2025

Page 1 of 14

Applicant: Mid Ocean Brands B.V.
Address: Unit 711-716, 7/F., Tower A, 83 King Lam Street, Cheung Sha Wan, Kowloon, Hong Kong.
Manufacturer: 117486
Address: /

The following sample(s) was /were submitted and identified on behalf of the clients as:

Sample Name: Wireless Speaker
Sample Model: MO8726
Series Model: MO9608
Sample Received Date: May 29, 2025
Testing Period: May 29, 2025 to Jun. 06, 2025

Test Requested

As requested by the applicant, refer to attached page(s) for details.

Approved by:

Tony Qian/Technical Manager



Scan to view
the original file

Guangdong KEYS Testing Technology Co., Ltd.

Address: Building 1, No.18, Shihuan Road, Dongcheng Subdistrict, Dongguan, Guangdong, China
Tel: +86-0769-89798319 <http://www.keys-lab.com> E-mail: info@keys-lab.com

This report is only responsible for the test results of the samples submitted for inspection, and is not responsible for the source of the samples submitted for inspection.
This report shall not be altered, increased or deleted. Without written approval of KEYS, this test report shall not be copied except in full and published as advertisement.

Test Report

Report No.: RKEYS250529118

Date: Jun. 16, 2025

Page 2 of 14

Summary of Test Results:

Test Standard	Conclusion
RoHS Directive 2011/65/EU and its subsequent amendments Directive (EU) 2015/863	
1	To determine Lead (Pb), Cadmium(Cd), Mercury(Hg), Hexavalent Chromium(Cr(VI)), Polybrominated Biphenyls (PBBs) and Polybrominated DiphenylEthers (PBDEs)content by screening test and chemical test.
2	To determine Phthalates (DBP, BBP, DEHP, DIBP) content by chemical test.

Test Report

Report No.: RKEYS250529118

Date: Jun. 16, 2025

Page 3 of 14

Test Results:

(1)XRF Test Result:

No.	XRF Result(mg/kg)					Chemical Test (mg/kg)	Conclusion
	Pb	Cd	Hg	Cr	Br		
1	BL	BL	BL	BL	BL	--	Pass
2	BL	BL	BL	X	--	CrVI: Negative	Pass
3	BL	BL	BL	BL	BL	--	Pass
4	BL	BL	BL	BL	BL	--	Pass
5	BL	BL	BL	BL	--	--	Pass
6	BL	BL	BL	BL	--	--	Pass
7	BL	BL	BL	BL	--	--	Pass
8	BL	BL	BL	BL	--	--	Pass
9	BL	BL	BL	BL	BL	--	Pass
10	BL	BL	BL	BL	BL	--	Pass
11	BL	BL	BL	BL	--	--	Pass
12	BL	BL	BL	BL	BL	--	Pass
13	BL	BL	BL	BL	--	--	Pass
14	BL	BL	BL	BL	BL	--	Pass
15	BL	BL	BL	BL	BL	--	Pass
16	BL	BL	BL	BL	BL	--	Pass
17	BL	BL	BL	BL	BL	--	Pass
18	BL	BL	BL	BL	--	--	Pass
19	BL	BL	BL	BL	--	--	Pass
20	BL	BL	BL	BL	--	--	Pass
21	BL	BL	BL	BL	BL	--	Pass
22	BL	BL	BL	BL	--	--	Pass
23	BL	BL	BL	BL	X	PBBs/PBDEs: N.D.	Pass
24	BL	BL	BL	BL	--	--	Pass
25	BL	BL	BL	BL	BL	--	Pass

Test Report

Report No.: RKEYS250529118

Date: Jun. 16, 2025

Page 4 of 14

No.	XRF Result(mg/kg)					Chemical Test (mg/kg)	Conclusion
	Pb	Cd	Hg	Cr	Br		
26	BL	BL	BL	BL	BL	--	Pass
27	BL	BL	BL	BL	BL	--	Pass
28	BL	BL	BL	BL	BL	--	Pass
29	BL	BL	BL	BL	BL	--	Pass
30	BL	BL	BL	BL	--	--	Pass
31	BL	BL	BL	BL	--	--	Pass
32	BL	BL	BL	BL	BL	--	Pass
33	BL	BL	BL	BL	BL	--	Pass
34	BL	BL	BL	BL	BL	--	Pass
35	BL	BL	BL	BL	BL	--	Pass
36	BL	BL	BL	BL	BL	--	Pass
37	BL	BL	BL	BL	BL	--	Pass
38	BL	BL	BL	BL	--	--	Pass
39	BL	BL	BL	BL	--	--	Pass

Remark:

- 1.It is the result on total Br while test item on restricted substances in PBBs/PBDEs. It is the result on total Cr while test item on restricted substances is Cr(VI).
- 2.Screening test by XRF spectroscopy. XRF screening limits in mg/kg for regulated elements according to IEC 62321-3-1: 2013Annex A.

Test Report

Report No.: RKEYS250529118

Date: Jun. 16, 2025

Page 5 of 14

Element	Polymer Material	Metallic Material	Composite Material
Pb	$BL \leq 700 - 3\sigma \leq X < 1300 + 3\sigma \leq OL$	$BL \leq 700 - 3\sigma \leq X < 1300 + 3\sigma \leq OL$	$BL \leq 500 - 3\sigma \leq X < 1500 + 3\sigma \leq OL$
Cd	$BL \leq 70 - 3\sigma \leq X < 130 + 3\sigma \leq OL$	$BL \leq 70 - 3\sigma \leq X < 130 + 3\sigma \leq OL$	$LOD < X < 150 + 3\sigma \leq OL$
Hg	$BL \leq 700 - 3\sigma \leq X < 1300 + 3\sigma \leq OL$	$BL \leq 700 - 3\sigma \leq X < 1300 + 3\sigma \leq OL$	$BL \leq 500 - 3\sigma \leq X < 1500 + 3\sigma \leq OL$
Cr	$BL \leq 700 - 3\sigma < X$	$BL \leq 700 - 3\sigma < X$	$BL \leq 500 - 3\sigma < X$
Br	$BL \leq 300 - 3\sigma < X$	--	$BL \leq 250 - 3\sigma < X$

XRF Detection Limits in mg/kg for Regulated Elements in Various Material

Element	Polymer Material	Metallic Material	Composite Material
Pb	10	50	50
Cd	10	50	50
Hg	10	50	50
Cr	10	50	50
Br	10	50	50

- Note:**
- 1.BL = Under the XRF screening limit
 - 2.OL = Future chemical test will be conducted while result is above the screening limit
 - 3.X = The symbol "X" marks the region where further investigation is necessary
 - 4.3σ = The reproducibility of analytical instruments
 - 5.LOD = Detection limit

(2) Wet Chemical Test

Test Item(s)	Test Method/ Test Equipment	Unit	Limit	MDL
Cadmium(Cd)	IEC 62321-5:2013, ICP-OES	mg/kg	100	2
Lead(Pb)	IEC 62321-5:2013, ICP-OES	mg/kg	1000	2
Mercury(Hg)	IEC 62321-4:2013+AMD1:2017, ICP-OES	mg/kg	1000	2
Hexavalent Chromium(CrVI) (Metal)	IEC 62321-7-1:2015, UV-Vis	μg/cm ²	0.13	0.1
Hexavalent Chromium(CrVI) (Nonmetal)	IEC 62321-7-2:2017, UV-Vis	mg/kg	1000	8

Guangdong KEYS Testing Technology Co., Ltd.

Address: Building 1, No.18, Shihuan Road, Dongcheng Subdistrict, Dongguan, Guangdong, China
Tel: +86-0769-89798319 <http://www.keys-lab.com> E-mail: info@keys-lab.com

This report is only responsible for the test results of the samples submitted for inspection, and is not responsible for the source of the samples submitted for inspection. This report shall not be altered, increased or deleted. Without written approval of KEYS, this test report shall not be copied except in full and published as advertisement.

Test Report

Report No.: RKEYS250529118

Date: Jun. 16, 2025

Page 6 of 14

PBBs (Next form)	IEC 62321-6:2015, GC-MS	mg/kg	1000	5
PBDEs (Next form)	IEC 62321-6:2015, GC-MS	mg/kg	1000	5
Dibutyl Phthalate(DBP)	IEC 62321-8:2017, GC-MS	mg/kg	1000	30
Butyl benzyl phthalate (BBP)	IEC 62321-8:2017, GC-MS	mg/kg	1000	30
Di-(2-ethylhexyl) Phthalate(DEHP)	IEC 62321-8:2017, GC-MS	mg/kg	1000	30
Diisobutyl phthalate (DIBP)	IEC 62321-8:2017, GC-MS	mg/kg	1000	30

PBBs		PBDEs	
Monobromobiphenyl	Hexabromobiphenyl	Monobromodiphenyl ether	Hexabromodiphenyl ether
Dibromobiphenyl	Heptabromobiphenyl	Dibromodiphenyl ether	Heptabromodiphenyl ether
Tribromobiphenyl	Octabromobiphenyl	Tribromodiphenyl ether	Octabromodiphenyl ether
Tetrabromobiphenyl	Nonabromobiphenyl	Tetrabromodiphenyl ether	Nonabromodiphenyl ether
Pentabromobiphenyl	Decabromobiphenyl	Pentabromodiphenyl ether	Decabromodiphenyl ether

- Note:**
1. mg/kg= ppm=0.0001%
 2. N.D.= Not Detected(<MDL)
 3. MDL = Method Detection Limit
 4. -- = No Testing
 5. When Cr (VI) in a sample is detected below the 0.10 $\mu\text{g}/\text{cm}^2$ LOQ (limit of quantification), the sample is considered to be negative for Cr (VI). Since Cr (VI) may not be uniformly distributed in the coating even within the same sample batch, a "grey zone" between 0.10 $\mu\text{g}/\text{cm}^2$ and 0.13 $\mu\text{g}/\text{cm}^2$ has been established as "inconclusive" to reduce inconsistent results due to unavoidable coating variations. In this case, additional testing may be necessary to confirm the presence of Cr (VI). When Cr (VI) is detected above 0.13 $\mu\text{g}/\text{cm}^2$, the sample is considered to be positive for the presence of Cr (VI) in the coating layer. Unavoidable coating variations may influence the determination Information on storage conditions and production date of the tested sample is unavailable and thus Cr (VI) results represent status of the sample at the time of testing.

Test Report

Report No.: RKEYS250529118

Date: Jun. 16, 2025

Page 7 of 14

(3)Phthalate Test Result:

Test No.	Test Item(s)				Conclusion
	Dibutyl Phthalate (DBP)	Butyl benzyl phthalate (BBP)	Di-(2-ethylhexyl) Phthalate (DEHP)	Diisobutyl phthalate (DIBP)	
1	N.D.	N.D.	N.D.	N.D.	Pass
3	N.D.	N.D.	N.D.	N.D.	Pass
4	N.D.	N.D.	N.D.	N.D.	Pass
9	N.D.	N.D.	N.D.	N.D.	Pass
10	N.D.	N.D.	N.D.	N.D.	Pass
12	N.D.	N.D.	N.D.	N.D.	Pass
14	N.D.	N.D.	N.D.	N.D.	Pass
15	N.D.	N.D.	N.D.	N.D.	Pass
16	N.D.	N.D.	N.D.	N.D.	Pass
17	N.D.	N.D.	N.D.	N.D.	Pass
21	N.D.	N.D.	N.D.	N.D.	Pass
23	N.D.	N.D.	N.D.	N.D.	Pass
25	N.D.	N.D.	N.D.	N.D.	Pass
26	N.D.	N.D.	N.D.	N.D.	Pass
27	N.D.	N.D.	N.D.	N.D.	Pass
28	N.D.	N.D.	N.D.	N.D.	Pass
29	N.D.	N.D.	N.D.	N.D.	Pass
32	N.D.	N.D.	N.D.	N.D.	Pass
33	N.D.	N.D.	N.D.	N.D.	Pass
34	N.D.	N.D.	N.D.	N.D.	Pass
35	N.D.	N.D.	N.D.	N.D.	Pass
36	N.D.	N.D.	N.D.	N.D.	Pass
37	N.D.	N.D.	N.D.	N.D.	Pass

Note: 1. mg/kg= ppm=0.0001%

2. N.D.= Not Detected(<MDL)

Guangdong KEYS Testing Technology Co., Ltd.

Address: Building 1, No.18, Shihuan Road, Dongcheng Subdistrict, Dongguan, Guangdong, China
Tel: +86-0769-89798319 <http://www.keys-lab.com> E-mail: info@keys-lab.com

This report is only responsible for the test results of the samples submitted for inspection, and is not responsible for the source of the samples submitted for inspection. This report shall not be altered, increased or deleted. Without written approval of KEYS, this test report shall not be copied except in full and published as advertisement.

Test Report

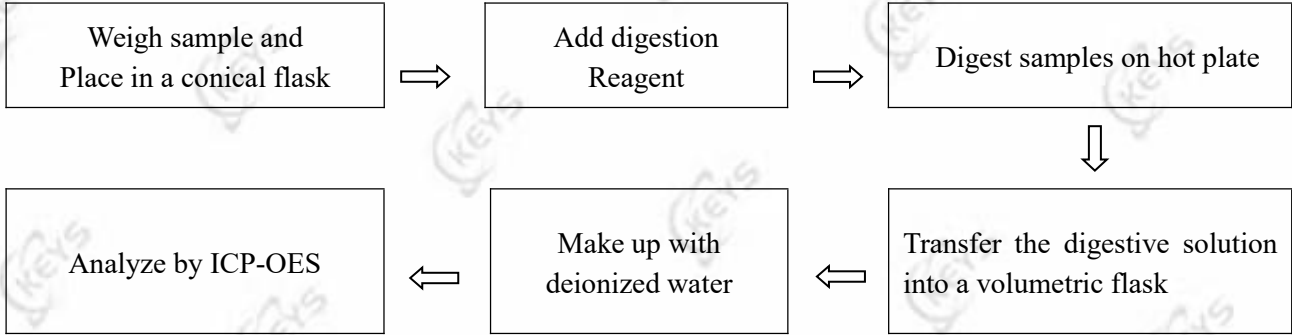
Report No.: RKEYS250529118

Date: Jun. 16, 2025

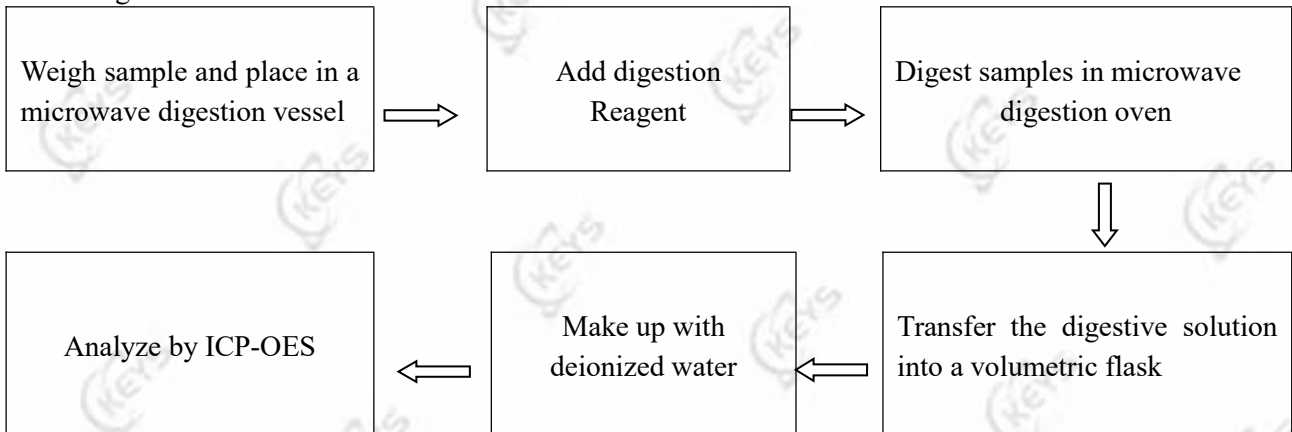
Page 8 of 14

Test Process:

1. Test for Cd/Pb Content



2. Test for Hg Content



Test Report

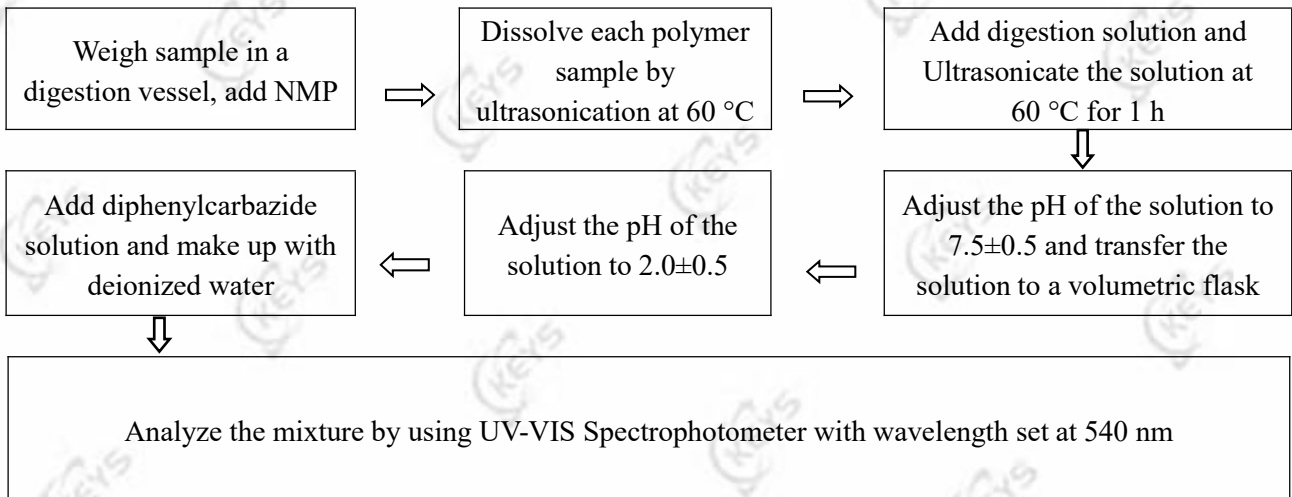
Report No.: RKEYS250529118

Date: Jun. 16, 2025

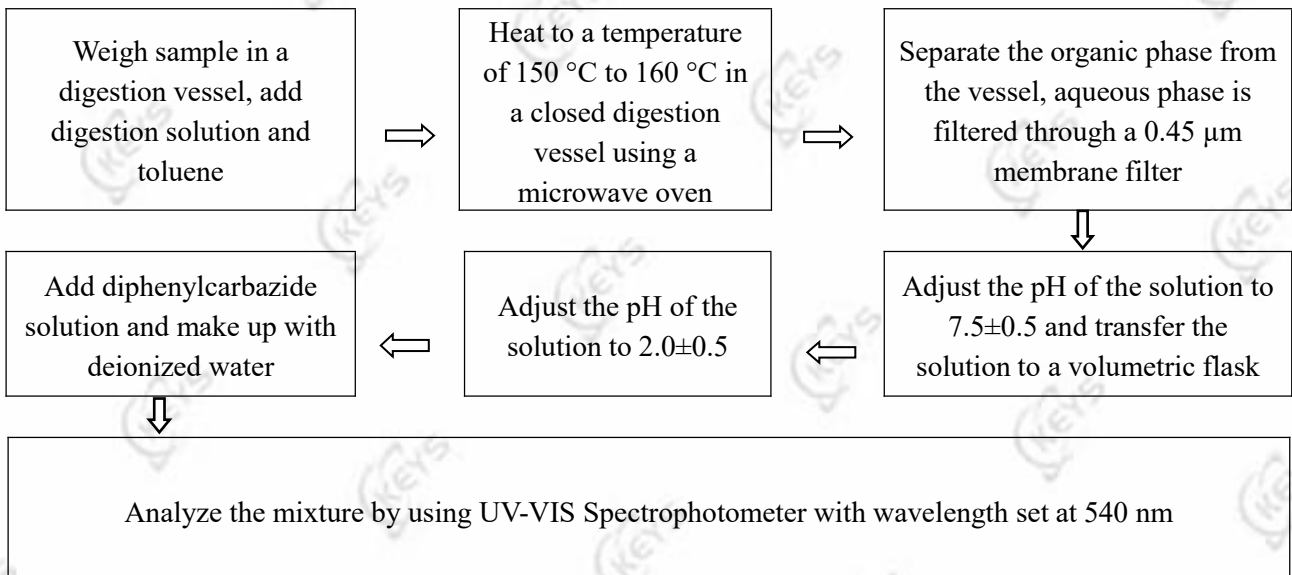
Page 9 of 14

3. Test for Chromium (VI) Content

Soluble polymers:



Insoluble/unknown polymers and electronics without Sb



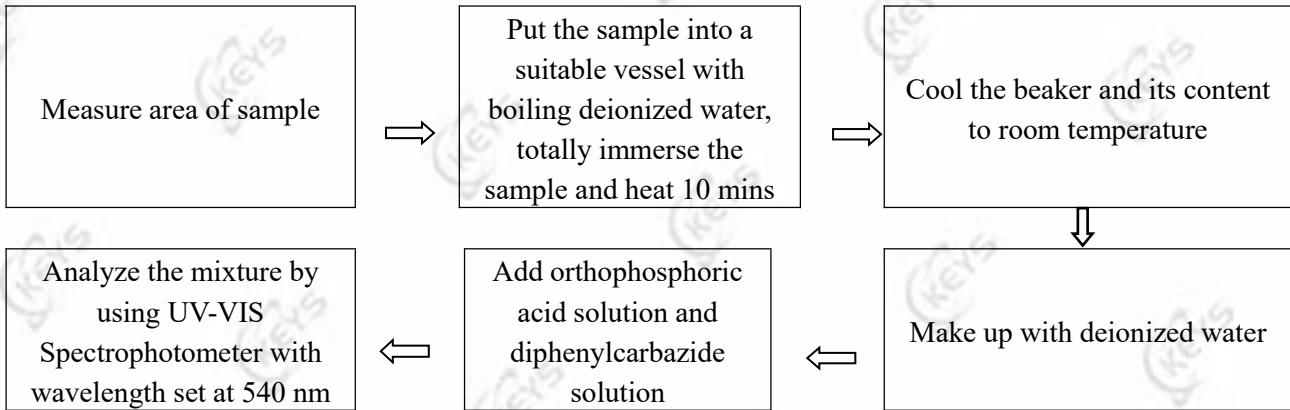
Test Report

Report No.: RKEYS250529118

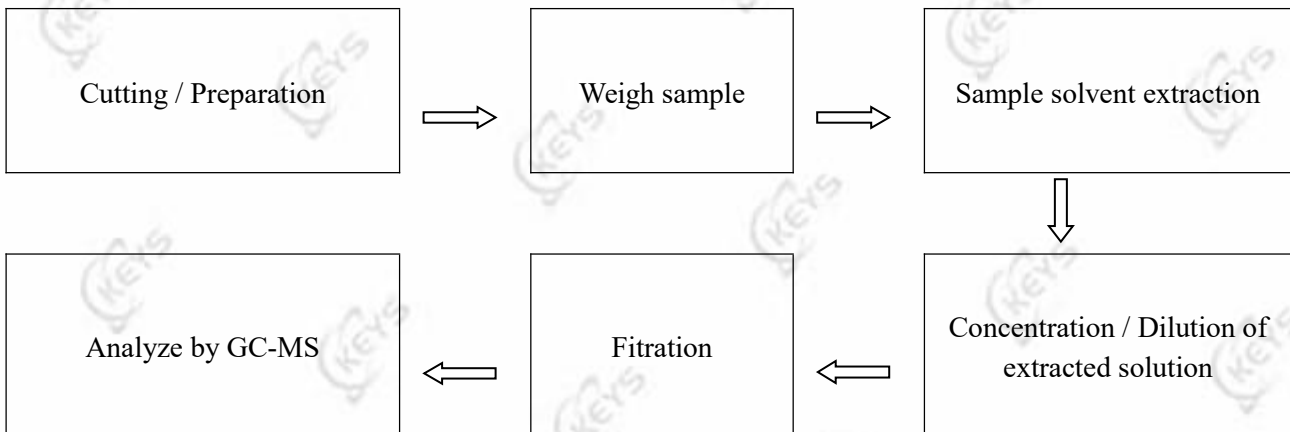
Date: Jun. 16, 2025

Page 10 of 14

Metal material



4. Test for DBP, BBP, DEHP, DIBP, PBB, PBDE Content



Test Report

Report No.: RKEYS250529118

Date: Jun. 16, 2025

Page 11 of 14

Sample Description:

No.	Description
1	White printing black plastic lid
2	Silvery metal screw
3	Black plastic shell
4	Black plastic sheet
5	Red metal casing
6	Black metal mesh
7	Silvery metal base
8	Black metal frame
9	Black rubber outer skin
10	Black eardrum paper
11	Copper-colored metal coil
12	Beige periosteal paper
13	Grey magnet
14	Black printing with Silvery plastic outer skin
15	Yellow tape
16	Black plastic fasteners
17	White plastic fasteners
18	Silvery metal stylus
19	Silvery metal outer skin
20	Silvery metal outer skin
21	White plastic fasteners
22	Silvery metal stylus
23	Blue PCB
24	Silvery metal mouth
25	Semi-transparent LED lamp
26	Black plastic switch
27	Black resistor

Test Report

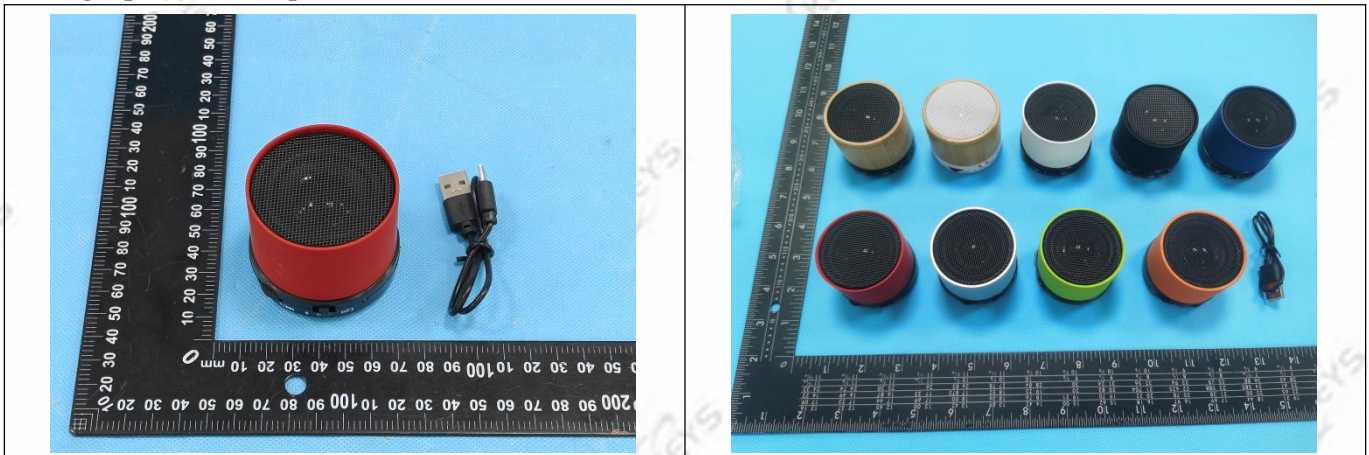
Report No.: RKEYS250529118

Date: Jun. 16, 2025

Page 12 of 14

No.	Description
28	Silvery crystal oscillator
29	Black IC
30	Copper-colored metal wire core
31	Silvery metal wire core
32	Red plastic wire skin
33	Red plastic wire skin
34	Black plastic wire skin
35	Black plastic wire skin
36	Pink plastic wire skin
37	White plastic wire skin
38	Silvery metal solder
39	Silvery metal solder

Photograph(s) of Sample:



Test Report

Report No.: RKEYS250529118

Date: Jun. 16, 2025

Page 13 of 14

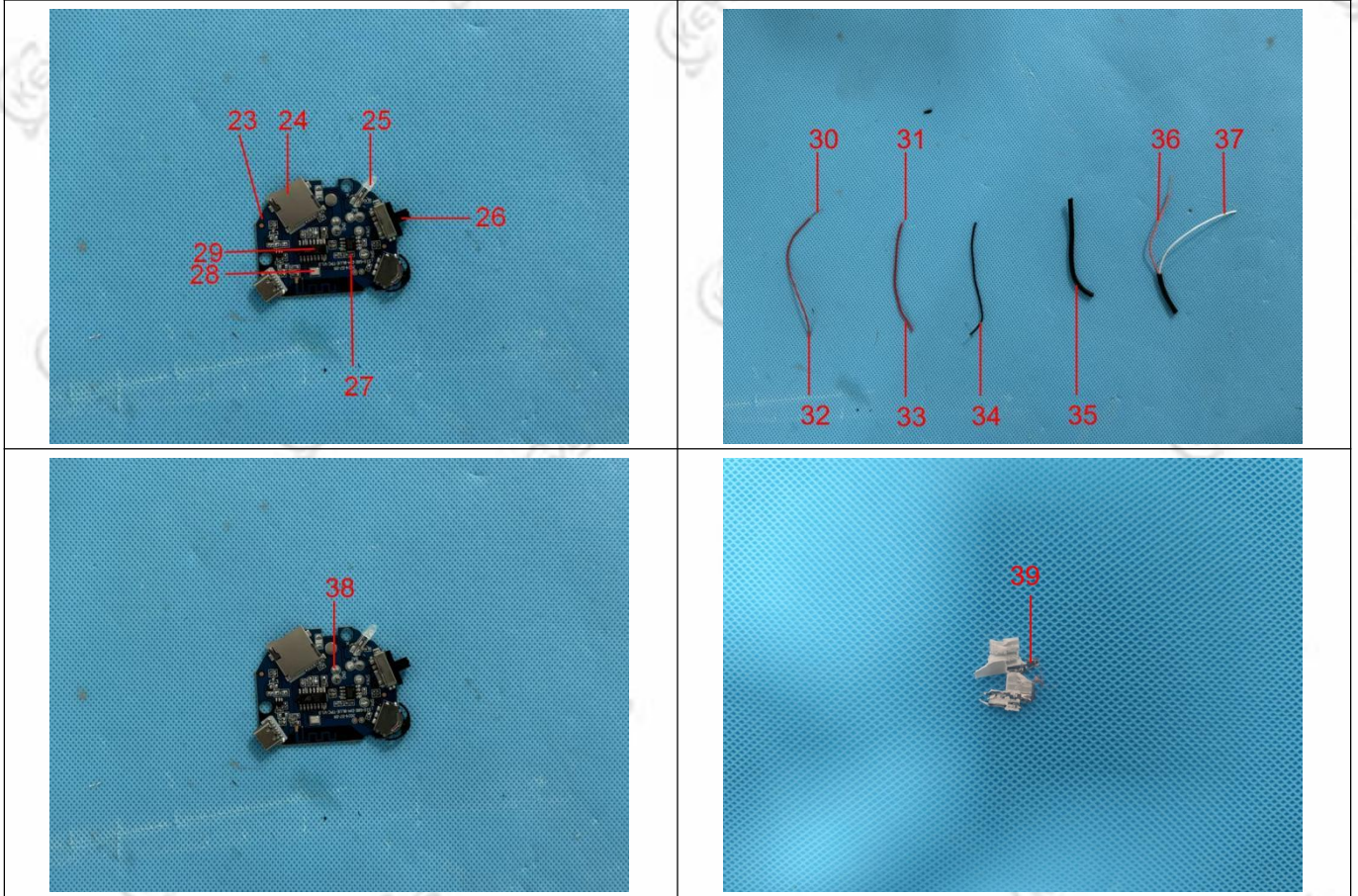


Test Report

Report No.: RKEYS250529118

Date: Jun. 16, 2025

Page 14 of 14



*** End of Report ***