



TEST REPORT

Report No.: ANT2403250051-010

Page 1 of 3

Applicant :

Address :

Manufacturer's name :

Address :

Report on the submitted samples said to be:

Sample Name : Lithium Ion Battery

Trade Mark : N/A

Tested Style No. : 10200

Series models : 10200, 10150, 10280, 10300, 10400, 10450 13200, 13280, 13300, 13400, 14500, 08090, 08350, 09270, 09360, 16240 08400, 16500, 18500, 18350

Sample reception time : March 25, 2024

Testing Period : March 25, 2024 ~ March 29, 2024

Test request : REGULATION (EU) 2023/1542 OF THE EUROPEAN PARLIAMENT AND OF THE COUNCIL

Test method : Please refer to next page(s).

Results : Please refer to next page(s).

SUMMARY

According to the customer's request, based on the performed tests on submitted sample, the result of total Lead (Pb), Cadmium (Cd), Mercury (Hg) content comply with the limit as set of REGULATION (EU) 2023/1542 OF THE EUROPEAN PARLIAMENT AND OF THE COUNCIL.

CONCLUSION

Pass

Redact By

Yetta

Reviewed By

Star

Issued By

Sophia

Date of issue April 10, 2024

Shenzhen Alliance Testing Technology Co., LTD.

Tel: 0755-23224560; E-mail: ant@ant-alliance.net;
http://www.ant-alliance.cn

202, building B, jinfengzhihuigu, No.45, Yonghe Road, Heping community, Fuhai street, Bao'an District, Shenzhen, Guangdong, China



TEST REPORT

Report No.: ANT2403250051-010

Page 2 of 3

Results:

A. The results of total Lead(Pb), Cadmium(Cd), Mercury(Hg) content according to REGULATION (EU) 2023/1542 OF THE EUROPEAN PARLIAMENT AND OF THE COUNCIL.

Test method: With reference to IEC 62321-5:2013 & IEC 62321-4:2013+AMD1:2017 CSV. Analysis was performed by inductively coupled plasma atomic emission spectrometer (ICP-OES)

Item	Unit	MDL	Results	Limit
Mercury (Hg)	mg/kg	2	N.D.	5
Cadmium (Cd)	mg/kg	2	N.D.	20
Lead (Pb)	mg/kg	2	N.D.	100*

Note:

*= From 18 August 2024, portable batteries, whether or not incorporated into appliances, shall not contain more than 0,01 % (=100 mg/kg) of lead (expressed as lead metal) by weight.:

※1 = The prohibition not apply to portable batteries and accumulators intended for use in:

- (a) emergency and alarm systems, including emergency lighting;
- (b) medical equipment;
- (c) cordless power tools.

※2 =All batteries, accumulators and battery packs shall be marked with forked pulley dustbin

※3 = If batteries, accumulators and button cells containing more than 5 mg/kg Mercury, or more than 20 mg/kg Cadmium, or more than 40 mg/kg Lead, the chemical conformity of metal that should exceed the limit under the marking of forked pulley dustbin is Hg, Cd and Pb, and the chemical conformity occupies at least one fourth of the area of the marking of forked pulley dustbin.

※4 = If batteries or accumulators contain more than one of the above metals, the corresponding chemical conformity should be added separately.

Remark:

- mg/kg = ppm
- N.D. = Not detected or less than MDL
- MDL = Method Detection Limit
- Results shown are of total weight of the battery sample.
- Flow chart appendix is included.
- Photo appendix is included.



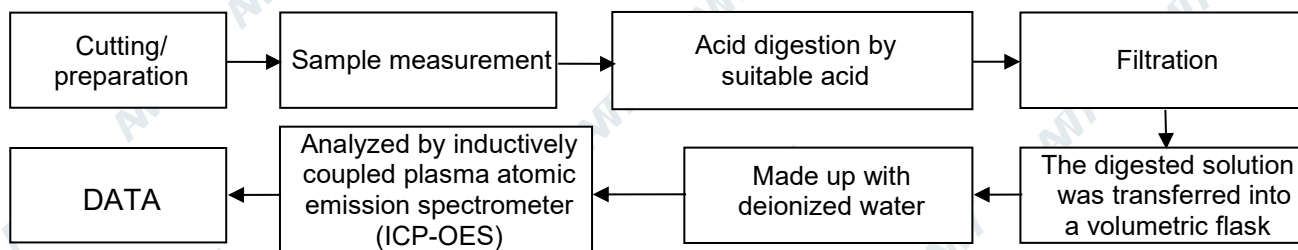
TEST REPORT

Report No.: ANT2403250051-010

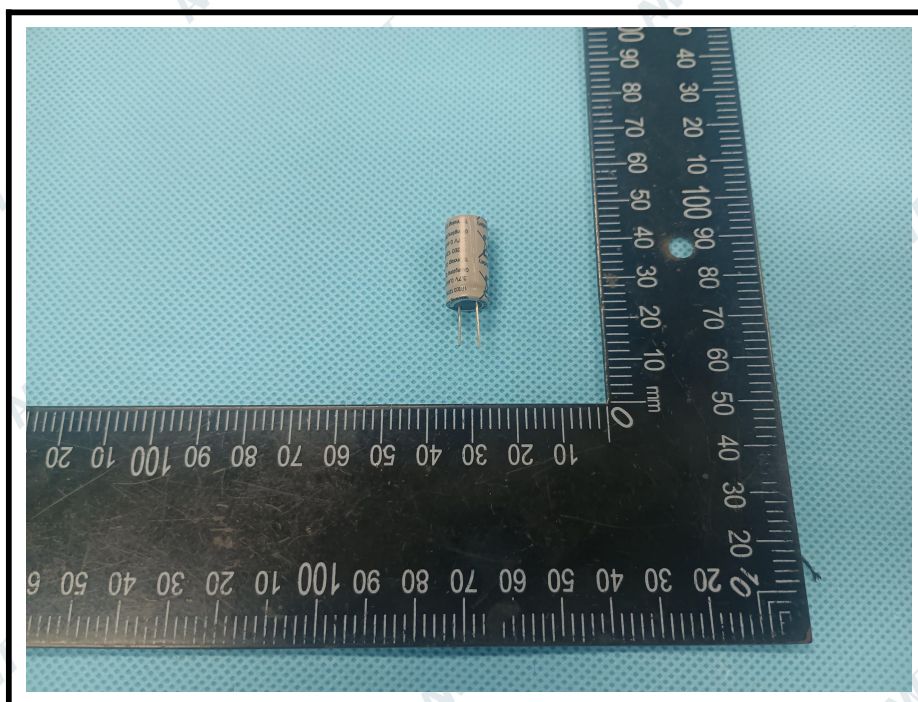
Page 3 of 3

Appendix

1. Test Flowchart for Pb / Cd /Hg contents



The photo of the sample



ANT authenticate the photo on original report only

Statement:

1. The test report is considered invalidated without approval signature, special seal on the perforation.
2. The result(s) shown in this report refer only to the sample(s) tested.
3. Without written approval of ANT, this report can't be reproduced except in full.
4. The sample(s) and sample information was/were provided by the client who should be responsible for the authenticity which ANT hasn't verified.
5. In case of any discrepancy between the English version and Chinese version of the testing reports (if generated), the Chinese version shall prevail.

*** End of Report ***

Shenzhen Alliance Testing Technology Co., LTD.

Tel: 0755-23224560; E-mail: ant@ant-alliance.net;
<http://www.ant-alliance.cn>

202, building B, jinfengzhihuigu, No.45, Yonghe Road, Heping community, Fuhai street, Bao'an District, Shenzhen, Guangdong, China

IEC 62133-2 TEST REPORT

For
Li-ion Cell
Model: 13300

Prepared for:

Prepared by: Shenzhen NCT Testing Technology Co., Ltd.
B2A101/B2A201/B2A202, Fuqiao 6th Area, Xintian, Fuhai Subdistrict,
Bao'an District, Shenzhen, Guangdong, China
TEL: +86-755-23218380

Report Number: NCT24036170XI1-1
Date of Test: 2024-09-04 to 2024-09-12
Date of Issue: 2024-09-12

Tested By: Dylan Zhu
Dylan Zhu

Reviewed By: Miya Li
Miya Li

Approved By: Boris Lin
Boris Lin



The results detailed in this test report relate only to the specific sample(s) tested. This report is not to be reproduced except in full, without written approval from NCT Testing Technology.

TEST REPORT IEC 62133-2 Secondary cells and batteries containing alkaline or other non-acid electrolytes – Safety requirements for portable sealed secondary cells, and for batteries made from them, for use in portable applications- Part 2: Lithium systems	
Report Number	NCT24036170XI1-1
Date of issue	2024-09-12
Total number of pages	23 pages
Applicant's name	
Address	
Test specification:	
Standard	IEC 62133-2:2017+AMD1:2021
Test procedure	Test Report
Non-standard test method	N/A
Test item description	Li-ion Cell
Trade Mark	N/A
Manufacturer	Same as applicant
Address	Same as applicant
Model/Type reference	13300
Ratings	3.7V, 300mAh, 1.11Wh

Testing procedure and testing location:	
Testing Laboratory:	
Testing location/ address: Shenzhen NCT Testing Technology Co., Ltd. B2A101/B2A201/B2A202, Fuqiao 6th Area, Xintian, Fuhai Subdistrict, Bao'an District, Shenzhen, Guangdong, China	
List of Attachments:	
Appendix 1: 1 page of Photo Documentation	
Summary of testing:	
Tests performed (name of test and test clause): cl.7.1 Charging procedure for test purposes (for Cells); cl.7.2.1 Continuous charging at constant voltage (cells); cl.7.3.1 External short circuit (cells); cl.7.3.3 Free fall (cells); cl.7.3.4 Thermal abuse (cells); cl.7.3.5 Crush (cells); cl.7.3.7 Forced discharge (cells); cl.7.3.9 Design evaluation – Forced internal short circuit (cells) cl.8.2 Small cell and battery safety information Tests are made with the number of cells and batteries specified in IEC 62133-2:2017+AMD1:2021 Table 1.	Testing location: Shenzhen NCT Testing Technology Co., Ltd. B2A101/B2A201/B2A202, Fuqiao 6th Area, Xintian, Fuhai Subdistrict, Bao'an District, Shenzhen, Guangdong, China
Summary of compliance with National Differences	
N/A	
<input checked="" type="checkbox"/> The product fulfils the requirements of <u>EN 62133-2: 2017+A1:2021</u>	

Copy of marking plate

The artwork below may be only a draft. The use of certification marks on a product must be authorized by the respective NCBs that own these marks.

N/A

Remark

By agreement between the cell manufacturer and the battery and/or end product manufacturer, component cells used in the manufacture of a battery need not be marked.

Information for safety mentioned on equipment's package

Potential for fire or burning. Do not disassemble, puncture, crush, heat or burn.

Use only with specified charger.

Keep small cells and batteries which are considered swallowable out of the reach of children.

Swallowing may lead to burns, perforation of soft tissue, and death. Severe burns can occur within 2h of ingestion.

In case of ingestion of a cell or battery, seek medical assistance promptly.



Test item particulars	
Classification of installation and use	To be defined in final product
Supply connection	DC Contact
Recommend charging method declared by the manufacturer	Charging the battery with 150mA constant current until 4.2V, then constant voltage until charge current reduces to 15mA at ambient 20°C±5°C.
Discharge current (0,2 I_L A)	60mA
Specified final voltage	2.75V
Upper limit charging voltage per cell	4.2V
Maximum charging current	300mA
Charging temperature upper limit	45°C
Charging temperature lower limit	0°C
Polymer cell electrolyte type	<input type="checkbox"/> gel polymer <input type="checkbox"/> solid polymer <input checked="" type="checkbox"/> N/A
Possible test case verdicts:	
- test case does not apply to the test object	N/A
- test object does meet the requirement	P (Pass)
- test object does not meet the requirement	F (Fail)
Testing	
Date of receipt of test item	2024-09-04
Date (s) of performance of tests	2024-09-04 to 2024-09-12
General remarks:	
<p>The test results presented in this report relate only to the object tested.</p> <p>This report shall not be reproduced, except in full, without the written approval of the Issuing testing laboratory.</p> <p>"(See Enclosure #)" refers to additional information appended to the report.</p> <p>"(See appended table)" refers to a table appended to the report.</p> <p>Throughout this report a <input type="checkbox"/> comma / <input checked="" type="checkbox"/> point is used as the decimal separator.</p>	
Name and address of factory (ies)	
Same as applicant	

General product information:

The cell consists of the positive electrode plate, negative electrode plate, separator, electrolyte, case. The positive and negative electrode plates are housed in the case in the state being separated by the separator.

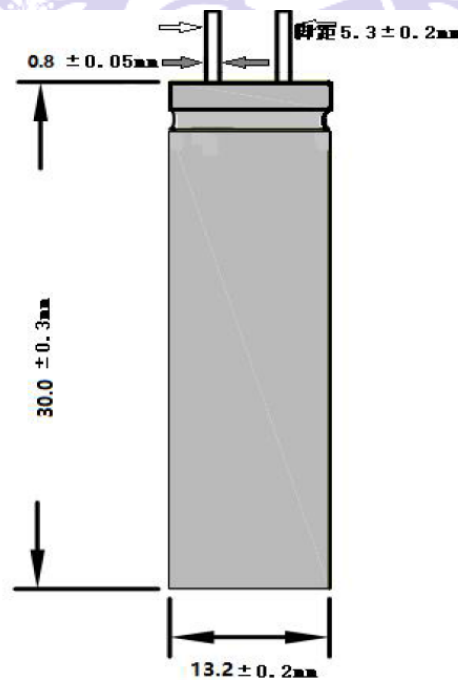
The main features of the cell are shown as below (clause 7.1.1):

Model (Cell)	Nominal capacity	Nominal voltage	Nominal Charge Current	Nominal Discharge Current	Maximum Charge Current	Maximum Discharge Current	Maximum Charge Voltage	Cut-off Voltage
13300	300mAh	3.7V	150mA	150mA	300mA	300mA	4.2V	2.75V

The main features of the cell are shown as below (clause 7.1.2):

Model (Cell)	Upper limit charge voltage	Taper-off current	Lower charge temperature	Upper charge temperature
13300	4.2V	15mA	0°C	45°C

Construction:



Circuit diagram:

None, cell only

IEC 62133-2			
Clause	Requirement + Test	Result - Remark	Verdict
4	PARAMETER MEASUREMENT TOLERANCES		P
	Parameter measurement tolerances		P
5	GENERAL SAFETY CONSIDERATIONS		P
5.1	General		P
	Cells and batteries so designed and constructed that they are safe under conditions of both intended use and reasonably foreseeable misuse		P
5.2	Insulation and wiring		N/A
	The insulation resistance between the positive terminal and externally exposed metal surfaces of the battery (excluding electrical contact surfaces) is not less than 5 MΩ	Cell only.	N/A
	Insulation resistance (MΩ)		—
	Internal wiring and insulation are sufficient to withstand maximum anticipated current, voltage and temperature requirements		N/A
	Orientation of wiring maintains adequate clearances and creepage distances between conductors		N/A
	Mechanical integrity of internal connections accommodates reasonably foreseeable misuse		N/A
5.3	Venting		P
	Battery cases and cells incorporate a pressure relief mechanism or are constructed so that they relieve excessive internal pressure at a value and rate that will preclude rupture, explosion and self-ignition	Venting mechanism exists on the top of cylindrical cell.	P
	Encapsulation used to support cells within an outer casing does not cause the battery to overheat during normal operation nor inhibit pressure relief		N/A
5.4	Temperature, voltage and current management		N/A
	Batteries are designed such that abnormal temperature rise conditions are prevented	Cell only.	N/A
	Batteries are designed to be within temperature, voltage and current limits specified by the cell manufacturer		N/A
	Batteries are provided with specifications and charging instructions for equipment manufacturers so that specified chargers are designed to maintain charging within the temperature, voltage and current limits specified		N/A
5.5	Terminal contacts		P

IEC 62133-2			
Clause	Requirement + Test	Result - Remark	Verdict
	The size and shape of the terminal contacts ensure that they can carry the maximum anticipated current		P
	External terminal contact surfaces are formed from conductive materials with good mechanical strength and corrosion resistance		P
	Terminal contacts are arranged to minimize the risk of short circuits		P
5.6	Assembly of cells into batteries		N/A
5.6.1	General		N/A
	Each battery has an independent control and protection for current, voltage, temperature and any other parameter required for safety and to maintain the cells within their operating region	Cell only.	N/A
	This protection may be provided external to the battery such as within the charger or the end devices		N/A
	If protection is external to the battery, the manufacturer of the battery provide this safety relevant information to the external device manufacturer for implementation		N/A
	If there is more than one battery housed in a single battery case, each battery has protective circuitry that can maintain the cells within their operating regions		N/A
	Manufacturers of cells specify current, voltage and temperature limits so that the battery manufacturer/designer may ensure proper design and assembly		N/A
	Batteries that are designed for the selective discharge of a portion of their series connected cells incorporate circuitry to prevent operation of cells outside the limits specified by the cell manufacturer		N/A
	Protective circuit components are added as appropriate and consideration given to the end-device application		N/A
	The manufacturer of the battery provide a safety analysis of the battery safety circuitry with a test report including a fault analysis of the protection circuit under both charging and discharging conditions confirming the compliance		N/A
5.6.2	Design recommendation		N/A
	For the battery consisting of a single cell or a single cellblock, it is recommended that the charging voltage of the cell does not exceed the upper limit of the charging voltage specified in Table 2	Cell only.	N/A

IEC 62133-2			
Clause	Requirement + Test	Result - Remark	Verdict
	For the battery consisting of series-connected plural single cells or series-connected plural cellblocks, it is recommended that the voltages of any one of the single cells or single cellblocks does not exceed the upper limit of the charging voltage, specified in Table 2, by monitoring the voltage of every single cell or the single cellblocks		N/A
	For the battery consisting of series-connected plural single cells or series-connected plural cellblocks, it is recommended that charging is stopped when the upper limit of the charging voltage is exceeded for any one of the single cells or single cellblocks by measuring the voltage of every single cell or the single cellblocks		N/A
	For batteries consisting of series-connected cells or cell blocks, nominal charge voltage are not counted as an overcharge protection		N/A
	For batteries consisting of series-connected cells or cell blocks, cells have closely matched capacities, be of the same design, be of the same chemistry and be from the same manufacturer		N/A
	It is recommended that the cells and cell blocks are not discharged beyond the cell manufacturer's specified final voltage		N/A
	For batteries consisting of series-connected cells or cell blocks, cell balancing circuitry are incorporated into the battery management system		N/A
5.6.3	Mechanical protection for cells and components of batteries	Cell only.	N/A
	Mechanical protection for cells, cell connections and control circuits within the battery are provided to prevent damage as a result of intended use and reasonably foreseeable misuse		N/A
	The mechanical protection can be provided by the battery case or it can be provided by the end product enclosure for those batteries intended for building into an end product		N/A
	The battery case and compartments housing cells are designed to accommodate cell dimensional tolerances during charging and discharging as recommended by the cell manufacturer		N/A
	For batteries intended for building into a portable end product, testing with the battery installed within the end product is considered when conducting mechanical tests		N/A
5.7	Quality plan		P

IEC 62133-2			
Clause	Requirement + Test	Result - Remark	Verdict
	The manufacturer prepares and implements a quality plan that defines procedures for the inspection of materials, components, cells and batteries and which covers the whole process of producing each type of cell or battery	Complied. Quality plan provided.	P
5.8	Battery safety components	See TABLE: Critical components information	N/A

6	TYPE TEST AND SAMPLE SIZE		P
	Tests are made with the number of cells or batteries specified in Table 1 using cells or batteries that are not more than six months old		P
	The internal resistance of coin cells are measured in accordance with Annex D. Coin cells with internal resistance less than or equal to 3 Ω are tested in accordance with Table 1	Not coin cells	N/A
	Unless otherwise specified, tests are carried out in an ambient temperature of 20 °C \pm 5 °C		P
	The safety analysis of 5.6.1 identify those components of the protection circuit that are critical for short-circuit, overcharge and over discharge protection	Cell only.	N/A
	When conducting the short-circuit test, consideration is given to the simulation of any single fault condition that is likely to occur in the protecting circuit that would affect the short-circuit test	Cell only.	N/A

7	SPECIFIC REQUIREMENTS AND TESTS		P
7.1	Charging procedure for test purposes		P
7.1.1	First procedure		P
	This charging procedure applies to subclauses other than those specified in 7.1.2		P
	Unless otherwise stated in this document, the charging procedure for test purposes is carried out in an ambient temperature of 20 °C \pm 5 °C, using the method declared by the manufacturer	See page 4.	P
	Prior to charging, the battery has been discharged at 20 °C \pm 5 °C at a constant current of 0,2 It A down to a specified final voltage	See page 4.	P
7.1.2	Second procedure		P
	This charging procedure applies only to 7.3.1, 7.3.4, 7.3.5, and 7.3.9		P

IEC 62133-2			
Clause	Requirement + Test	Result - Remark	Verdict
	After stabilization for 1 h to 4 h, at an ambient temperature of the highest test temperature and the lowest test temperature, respectively, as specified in Table 2, cells are charged by using the upper limit charging voltage and maximum charging current, until the charging current is reduced to 0,05 It A, using a constant current to constant voltage charging method	Charge temperature range: 0-45°C declared. 0°C used for lower limit tests. 45°C used for upper limit tests.	P
7.2	Intended use		P
7.2.1	Continuous charging at constant voltage (cells)		P
	Fully charged cells are subjected for 7 days to a charge using the charging method for current and standard voltage specified by the cell manufacturer	Charging for 7 days with 150mA.	P
	Results: no fire, no explosion, no leakage..... :	(See appended table 7.2.1)	P
7.2.2	Case stress at high ambient temperature (battery)	Cell only.	N/A
	Oven temperature (°C)		—
	Results: no physical distortion of the battery case resulting in exposure of internal protective components and cells		N/A
7.3	Reasonably foreseeable misuse		P
7.3.1	External short-circuit (cell)	Tested complied.	P
	The cells were tested until one of the following occurred:		P
	- 24 hours elapsed; or		N/A
	- The case temperature declined by 20 % of the maximum temperature rise		P
	Results: no fire, no explosion..... :	(See appended table 7.3.1)	P
7.3.2	External short-circuit (battery)	Cell only.	N/A
	The batteries were tested until one of the following occurred:		N/A
	- 24 hours elapsed; or		N/A
	- The case temperature declined by 20 % of the maximum temperature rise		N/A
	In case of rapid decline in short circuit current, the battery pack remained on test for an additional one hour after the current reached a low end steady state condition		N/A
	A single fault in the discharge protection circuit is conducted on one to four (depending upon the protection circuit) of the five samples before conducting the short-circuit test		N/A

IEC 62133-2			
Clause	Requirement + Test	Result - Remark	Verdict
	A single fault applies to protective component parts such as MOSFET (metal oxide semiconductor field-effect transistor), fuse, thermostat or positive temperature coefficient (PTC) thermistor		N/A
	Results: no fire, no explosion..... :		N/A
7.3.3	Free fall	Tested complied.	P
	Results: no fire, no explosion	No fire. No explosion	P
7.3.4	Thermal abuse (cells)	Tested complied.	P
	Oven temperature (°C) :	130°C	—
	Results: no fire, no explosion	No fire. No explosion	P
7.3.5	Crush (cells)	Tested complied.	P
	The crushing force was released upon:		P
	- The maximum force of 13 kN ± 0,78 kN has been applied; or		P
	- An abrupt voltage drop of one-third of the original voltage has been obtained		N/A
	Results: no fire, no explosion..... :	(See appended table 7.3.5)	P
7.3.6	Over-charging of battery	Cell only.	N/A
	The supply voltage which is:		N/A
	- 1,4 times the upper limit charging voltage presented in Table A.1 (but not to exceed 6,0 V) for single cell/cell block batteries or		N/A
	- 1,2 times the upper limit charging voltage resented in Table A.1 per cell for series connected multi-cell batteries, and		N/A
	- Sufficient to maintain a current of 2,0 It A throughout the duration of the test or until the supply voltage is reached		N/A
	Test was continued until the temperature of the outer casing:		N/A
	- Reached steady state conditions (less than 10 °C change in 30-minute period); or		N/A
	- Returned to ambient		N/A
	Results: no fire, no explosion..... :		N/A
7.3.7	Forced discharge (cells)	Tested complied.	P
	Discharge a single cell to the lower limit discharge voltage specified by the cell manufacturer		P

IEC 62133-2			
Clause	Requirement + Test	Result - Remark	Verdict
	The discharged cell is then subjected to a forced discharge at 1 It A to the negative value of the upper limit charging voltage		P
	- The discharge voltage reaches the negative value of upper limit charging voltage within the testing duration. The voltage is maintained at the negative value of the upper limit charging voltage by reducing the current for the remainder of the testing duration		N/A
	- The discharge voltage does not reach the negative value of upper limit charging voltage within the testing duration. The test is terminated at the end of the testing duration		P
	Results: no fire, no explosion..... :	(See appended table 7.3.7)	P
7.3.8	Mechanical tests (batteries)		N/A
7.3.8.1	Vibration	Cell only.	N/A
	Results: no fire, no explosion, no rupture, no leakage or venting. :		N/A
7.3.8.2	Mechanical shock	Cell only.	N/A
	Results: no leakage, no venting, no rupture, no explosion and no fire :		N/A
7.3.9	Design evaluation – Forced internal short-circuit (cells)	Tested complied.	P
	The cells complied with national requirement for :	France, Japan, Republic of Korea, Switzerland	—
	The pressing was stopped upon:		P
	- A voltage drop of 50 mV has been detected; or		N/A
	- The pressing force of 800 N (cylindrical cells) or 400 N (prismatic cells) has been reached	800N for cylindrical cells.	P
	Results: no fire..... :	(See appended table 7.3.9)	P
8	INFORMATION FOR SAFETY		P
8.1	General		P
	Manufacturers of secondary cells provides information about current, voltage and temperature limits of their products	Information for safety mentioned in manufacturer's specifications.	P
	Manufacturers of batteries provides information regarding how to minimize and mitigate hazards to equipment manufacturers or end-users		N/A

IEC 62133-2			
Clause	Requirement + Test	Result - Remark	Verdict
	Systems analyses are performed by device manufacturers to ensure that a particular battery design prevents hazards from occurring during use of a product		N/A
	As appropriate, any information relating to hazard avoidance resulting from a system analysis is provided to the end user		N/A
	Do not allow children to replace batteries without adult supervision		P
8.2	Small cell and battery safety information	Small cells.	P
	The following warning language is to be provided with the information packaged with the small cells and batteries or equipment using them:	Information for safety mentioned on equipment's package.	P
	- Keep small cells and batteries which are considered swallowable out of the reach of children		P
	- Swallowing may lead to burns, perforation of soft tissue, and death. Severe burns can occur within 2 h of ingestion		P
	- In case of ingestion of a cell or battery, seek medical assistance promptly		P
9	MARKING		P
9.1	Cell marking		P
	Cells are marked as specified in IEC 61960, except coin cells	The cell is marked in accordance with IEC61960, also see page 4.	P
	Coin cells whose external surface area is too small to accommodate the markings on the cells show the designation and polarity	Not coin cells.	N/A
	By agreement between the cell manufacturer and the battery and/or end product manufacturer, component cells used in the manufacture of a battery need not be marked		N/A
9.2	Battery marking	Cell only.	N/A
	Batteries are marked as specified in IEC 61960, except for coin batteries		N/A
	Coin batteries whose external surface area is too small to accommodate the markings on the batteries show the designation and polarity		N/A
	Batteries are marked with an appropriate caution statement		N/A

IEC 62133-2			
Clause	Requirement + Test	Result - Remark	Verdict
	- Terminals have clear polarity marking on the external surface of the battery, or		N/A
	- Not be marked with polarity markings if the design of the external connector prevents reverse polarity connections		N/A
9.3	Caution for ingestion of small cells and batteries		N/A
	Coin cells and batteries identified as small batteries include a caution statement regarding the hazards of ingestion in accordance with 8.2	Not coin cells	N/A
	Small cells and batteries are intended for direct sale in consumer-replaceable applications, caution for ingestion is given on the immediate package	Not intended for direct sale.	N/A
9.4	Other information		N/A
	The following information are marked on or supplied with the battery:		N/A
	- Storage and disposal instructions		N/A
	- Recommended charging instructions		N/A
10	PACKAGING AND TRANSPORT		P
	Packaging for coin cells are not be small enough to fit within the limits of the ingestion gauge of Figure 3		N/A
ANNEX A	CHARGING AND DISCHARGING RANGE OF SECONDARY LITHIUM ION CELLS FOR SAFE USE		P
A.1	General		P
A.2	Safety of lithium ion secondary battery	Complied.	P
A.3	Consideration on charging voltage	Complied.	P
A.3.1	General		P
A.3.2	Upper limit charging voltage	4.2V applied.	P
A.3.2.1	General		P
A.3.2.2	Explanation of safety viewpoint		P
A.3.2.3	Safety requirements, when different upper limit charging voltage is applied	4.2V applied.	P
A.4	Consideration of temperature and charging current		P
A.4.1	General		P
A.4.2	Recommended temperature range	Charging temperature range declared by client is: 0-45°C	P

IEC 62133-2			
Clause	Requirement + Test	Result - Remark	Verdict
A.4.2.1	General		P
A.4.2.2	Safety consideration when a different recommended temperature range is applied		N/A
A.4.3	High temperature range		N/A
A.4.3.1	General		N/A
A.4.3.2	Explanation of safety viewpoint		N/A
A.4.3.3	Safety considerations when specifying charging conditions in the high temperature range		N/A
A.4.3.4	Safety considerations when specifying a new upper limit in the high temperature range		N/A
A.4.4	Low temperature range		N/A
A.4.4.1	General		N/A
A.4.4.2	Explanation of safety viewpoint		N/A
A.4.4.3	Safety considerations, when specifying charging conditions in the low temperature range		N/A
A.4.4.4	Safety considerations when specifying a new lower limit in the low temperature range		N/A
A.4.5	Scope of the application of charging current		P
A.4.6	Consideration of discharge		P
A.4.6.1	General		P
A.4.6.2	Final discharge voltage and explanation of safety viewpoint	Cell specified final voltage 2.75V, not exceed 2.75V specified by cell manufacturer.	P
A.4.6.3	Discharge current and temperature range		P
A.4.6.4	Scope of application of the discharging current		P
A.5	Sample preparation		P
A.5.1	General		P
A.5.2	Insertion procedure for nickel particle to generate internal short		P
A.5.3	Disassembly of charged cell		P
A.5.4	Shape of nickel particle		P
A.5.5	Insertion of nickel particle in cylindrical cell		P
A.5.5.1	Insertion of nickel particle in winding core		P
A.5.5.2	Marking the position of the nickel particle on both ends of the winding core of the separator		P
A.5.6	Insertion of nickel particle in prismatic cell		N/A

IEC 62133-2			
Clause	Requirement + Test	Result - Remark	Verdict
A.6	Experimental procedure of the forced internal short-circuit test		P
A.6.1	Material and tools for preparation of nickel particle		P
A.6.2	Example of a nickel particle preparation procedure		P
A.6.3	Positioning (or placement) of a nickel particle		P
A.6.4	Damaged separator precaution		P
A.6.5	Caution for rewinding separator and electrode		P
A.6.6	Insulation film for preventing short-circuit		P
A.6.7	Caution when disassembling a cell		P
A.6.8	Protective equipment for safety		P
A.6.9	Caution in the case of fire during disassembling		P
A.6.10	Caution for the disassembling process and pressing the electrode core		P
A.6.11	Recommended specifications for the pressing device		P
ANNEX B	RECOMMENDATIONS TO EQUIPMENT MANUFACTURERS AND BATTERY ASSEMBLERS		N/A
ANNEX C	RECOMMENDATIONS TO THE END-USERS		N/A
ANNEX D	MEASUREMENT OF THE INTERNAL AC RESISTANCE FOR COIN CELLS		N/A
D.1	General	Not coin cells.	N/A
D.2	Method		N/A
	A sample size of three coin cells is required for this measurement		N/A
	Coin cells with an internal resistance greater than 3 Ω require no further testing	(See appended table D.2)	N/A
	Coin cells with an internal resistance less than or equal to 3 Ω are subjected to the testing according to Clause 6 and Table 1		N/A
ANNEX E	PACKAGING AND TRANSPORT		N/A
ANNEX F	COMPONENT STANDARDS REFERENCES		N/A

5.1 – 5.6		TABLE: Critical components information			
Object/part no.	Manufacturer/ trademark	Type/model	Technical data	Standard	Mark(s) of conformity
Cell		13300	3.7V, 300mAh	IEC 62133-2:2017+AM D1:2021	Tested with appliance
-Positive electrode	--	--	LiCoO ₂ , PVDF, NMP, Conductive Additive	--	--
-Negative electrode	--	--	Graphite, CMC, SBR, Distilled Water, Conductive	--	--
-Separator	--	--	Shutdown temperature: 130°C	--	--
-Electrolyte	--	--	LiPF ₆ +EMC+EC+DMC	--	--
Supplementary information: N/A					

7.2.1	TABLE: Continuous charging at constant voltage (cells)				P
Sample no.	Recommended charging voltage Vc (Vdc)	Recommended charging current I _{rec} (A)	OCV before test(Vdc)	Results	
Cell #1	4.20	0.15	4.18	P	
Cell #2	4.20	0.15	4.19	P	
Cell #3	4.20	0.15	4.19	P	
Cell #4	4.20	0.15	4.18	P	
Cell #5	4.20	0.15	4.19	P	
Supplementary information: - No fire or explosion - No leakage					

7.3.1	TABLE: External short-circuit (cell)				P
Sample no.	Ambient T (°C)	OCV before test (Vdc)	Resistance of circuit (mΩ)	Maximum case temperature rise ΔT (°C)	Results
Samples charged at charging temperature upper limit (45°C)					
Cell #1	55.8	4.15	83.0	113.5	P
Cell #2	55.8	4.15	81.4	115.9	P
Cell #3	55.8	4.16	82.0	116.3	P
Cell #4	55.8	4.15	81.9	114.4	P
Cell #5	55.8	4.16	83.2	115.7	P
Samples charged at charging temperature lower limit (0°C)					
Cell #6	55.9	4.13	85.0	120.3	P
Cell #7	55.9	4.14	81.4	121.5	P
Cell #8	55.9	4.14	82.9	119.8	P
Cell #9	55.9	4.13	83.0	120.1	P
Cell #10	55.9	4.14	84.1	119.2	P
Supplementary information: - No fire or explosion					

7.3.2	TABLE: External short-circuit (battery)					N/A
Sample no.	Ambient T (°C)	OCV before test (Vdc)	Resistance of circuit (mΩ)	Maximum case temperature rise ΔT (°C)	Component single fault condition	Results
Supplementary information: - No fire or explosion						

7.3.5	TABLE: Crush (cells)				P
Sample no.	OCV before test (Vdc)	OCV at removal of crushing force (Vdc)	Maximum force applied to the cell during crush (kN)	Results	
Samples charged at charging temperature upper limit (45°C)					
Cell #1	4.16	4.15	13.00	P	
Cell #2	4.15	4.15	12.99	P	
Cell #3	4.15	4.14	13.01	P	
Cell #4	4.16	4.15	12.96	P	
Cell #5	4.15	4.14	13.03	P	
Samples charged at charging temperature lower limit (0°C)					
Cell #6	4.14	4.13	13.00	P	
Cell #7	4.14	4.12	12.99	P	
Cell #8	4.13	4.13	12.97	P	
Cell #9	4.14	4.13	13.01	P	
Cell #10	4.13	4.12	13.02	P	
Supplementary information:					
- No fire or explosion					

7.3.6	TABLE: Over-charging of battery				N/A
Constant charging current (A)					—
Supply voltage (Vdc)					—
Sample no.	OCV before charging (Vdc)	Total charging time (minute)	Maximum outer case temperature (°C)	Results	
Supplementary information:					
- No fire or explosion					

7.3.7	TABLE: Forced discharge (cells)				P
Sample no.	OCV before application of reverse charge (Vdc)	Measured reverse charge I_t (A)	Lower limit discharge voltage (Vdc)	Results	
Cell #1	3.14	0.30	2.75	P	
Cell #2	3.15	0.30	2.75	P	
Cell #3	3.15	0.30	2.75	P	
Cell #4	3.14	0.30	2.75	P	
Cell #5	3.14	0.30	2.75	P	
Supplementary information:					
- No fire or explosion					

7.3.8.1	TABLE: Vibration					N/A
Sample no.	OCV before test (Vdc)	OCV after test (Vdc)	Mass before test (g)	Mass after test(g)	Results	
Supplementary information:						
- No fire or explosion - No rupture - No leakage - No venting						

7.3.8.2	TABLE: Mechanical shock					N/A
Sample no.	OCV before test (Vdc)	OCV after test (Vdc)	Mass before test (g)	Mass after test(g)	Results	

Supplementary information:

- No fire or explosion
- No rupture
- No leakage
- No venting

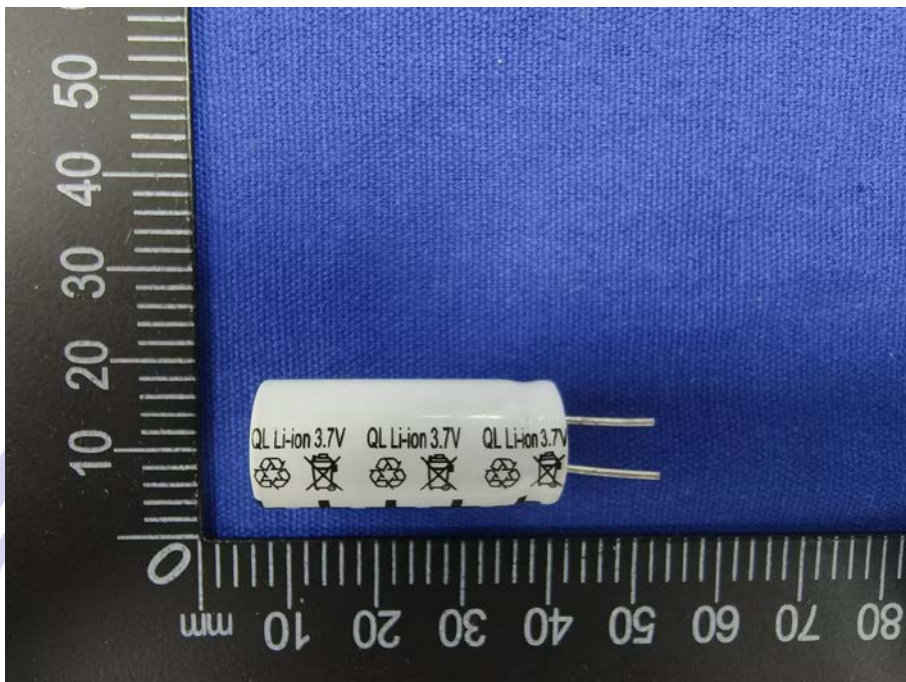
7.3.9	TABLE: Forced internal short circuit (cells)					P
Sample no.	Chamber ambient T (°C)	OCV before test (Vdc)	Particle location ¹⁾	Maximum applied pressure (N)	Results	
Samples charged at charging temperature upper limit (45°C)						
Cell #1	45	4.16	1	800	P	
Cell #2	45	4.15	1	800	P	
Cell #3	45	4.16	1	800	P	
Cell #4	45	4.16	1	800	P	
Cell #5	45	4.15	1	800	P	
Samples charged at charging temperature lower limit (0°C)						
Cell #6	0	4.13	1	800	P	
Cell #7	0	4.13	1	800	P	
Cell #8	0	4.14	1	800	P	
Cell #9	0	4.14	1	800	P	
Cell #10	0	4.13	1	800	P	
Supplementary information:						
¹⁾ Identify one of the following:						
1: Nickel particle inserted between positive and negative (active material) coated area.						
2: Nickel particle inserted between positive aluminium foil and negative active material coated area.						
- No fire or explosion						

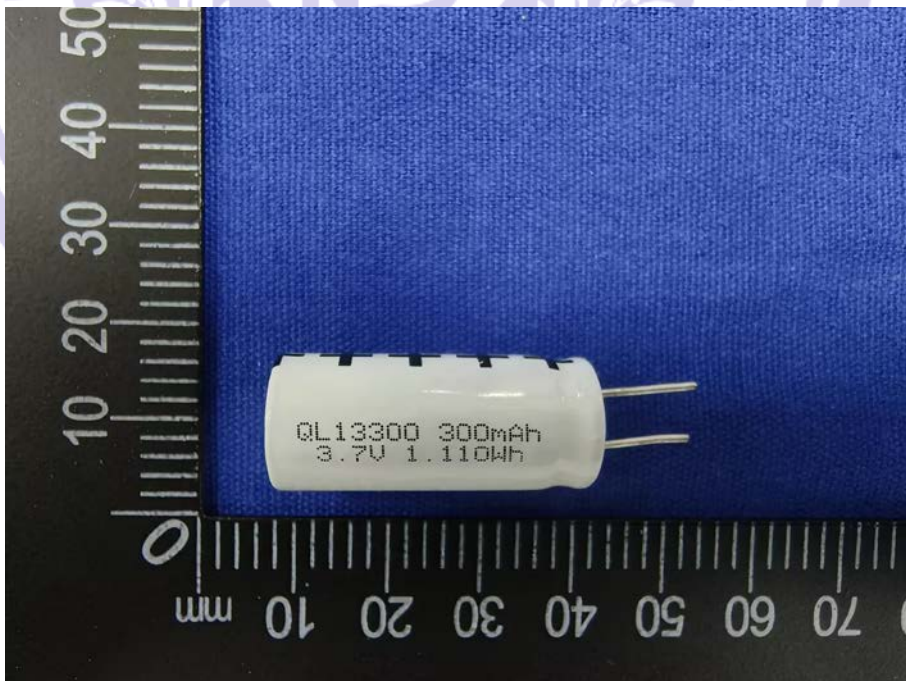
D.2	TABLE: Internal AC resistance for coin cells				N/A
Sample no.	Ambient T (°C)	Store time (h)	Resistance Rac (Ω)	Results ¹⁾	

Supplementary information:

¹⁾ Coin cells with internal resistance less than or equal to 3 Ω, see test result on corresponding tables



Details of:	Fig.1–Front view of cell 13300
	 <p>A photograph showing the front view of a white cylindrical cell 13300. The cell is positioned horizontally next to a black ruler with white markings. The ruler shows measurements in millimeters (0 to 80) and centimeters (10 to 50). The cell has three printed labels: 'QL Li-Ion 3.7V', 'QL Li-Ion 3.7V', and 'QL Li-Ion 3.7V'. Each label is accompanied by a recycling symbol and a crossed-out incineration symbol. The cell is placed on a blue textured surface.</p>

Details of:	Fig. 2–Back view of cell 13300
	 <p>A photograph showing the back view of a white cylindrical cell 13300. The cell is positioned horizontally next to a black ruler with white markings. The ruler shows measurements in millimeters (0 to 80) and centimeters (10 to 50). The cell has two printed labels: 'QL13300 300mAh' and '3.7V 1.110Wh'. The cell is placed on a blue textured surface.</p>

---End of Test Report---