

EU Declaration of Compliance (DOC)

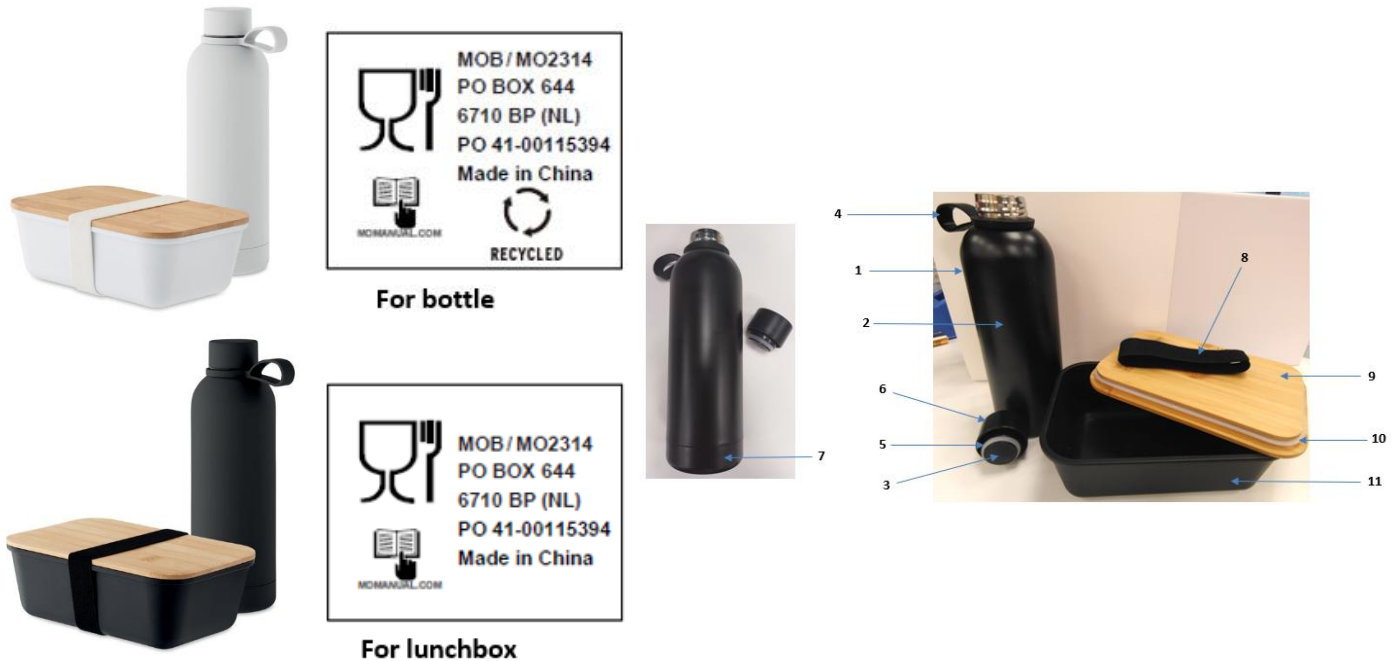
For materials intended to come into contact with food (EU No. 10/2011)

Company name: **Mid Ocean Brands BV (MOB)**
Postal address: **PO BOX 644**
Postcode and City: **6710 BP Ede (NL)**
Telephone number: **0031 (0)342 426992**
E-mail address: **DOC@reclamond.com**

We declare that DOC issued under our sole responsibility and belongs to the following product:

Item number	MO2314-03, -06
Description	2 piece lunch gift set, including double wall vacuum insulating bottle in recycled stainless steel, PP lunch box with bamboo lid and RPET elastic band. Capacity 500ml and 900ml.
Country of origin	China
Batch	PO 41-00115394

Object of the declaration (identification of food contact product allowing traceability; it may include a colour image of sufficient clarity where necessary for the identification of the product):



1, 2, 7, 8, 10: direct food contact

The following substances subject to restrictions and/or specification are used in the above-mentioned product. The materials and raw materials used comply with Regulation (EU) No 10/2011.

Chemical Name	CAS	EINECS	Percent
9. Bamboo - Phyllostachys edulis	-	-	34,36%
1. Stainless Steel 304			
- Iron 71.095%	7439-89-6	231-096-4	19,09%
- Chromium 18%	7440-47-3	231-157-5	

- Nickel 8%	7440-02-0	231-111-4	
- Manganese 2%	7439-96-5	231-105-1	
- Silicone 0.75%	7440-21-3	231-130-8	
- Carbon 0.08%	7440-44-0	231-153-3	
- Phosphorus 0.045%	7723-14-0	231-768-7	
- Sulfur 0.03%	7704-34-9	231-722-6	
11. Polypropylene (PP)	9003-07-0	618-352-4	17,45%
2. Stainless Steel 304			
- Iron 71.095%	7439-89-6	231-096-4	
- Chromium 18%	7440-47-3	231-157-5	
- Nickel 8%	7440-02-0	231-111-4	
- Manganese 2%	7439-96-5	231-105-1	
- Silicone 0.75%	7440-21-3	231-130-8	
- Carbon 0.08%	7440-44-0	231-153-3	
- Phosphorus 0.045%	7723-14-0	231-768-7	
- Sulfur 0.03%	7704-34-9	231-722-6	
7. Stainless Steel 201			
- Iron 74.01%	7439-89-6	231-096-4	
- Chromium 16%	7440-47-3	231-157-5	
- Manganese 5.5%	7439-96-5	231-105-1	
- Nickel 3.5%	7440-02-0	231-111-4	
- Silicone 0.75%	7440-21-3	231-130-8	
- Carbon 0.15%	7440-44-0	231-153-3	
- Phosphorus 0.06%	7723-14-0	231-768-7	
- Sulfur 0.03%	7704-34-9	231-722-6	
3. Polypropylene (PP)	9003-07-0	618-352-4	2,27%
10. Silicone	7440-21-3	231-130-8	1,64%
4. Silicone	7440-21-3	231-130-8	1,20%
8. Recycled Polyethylene Terephthalate (RPET)	25038-59-9	607-507-1	1,09%
6. Stainless Steel 201			
- Iron 74.01%	7439-89-6	231-096-4	
- Chromium 16%	7440-47-3	231-157-5	
- Manganese 5.5%	7439-96-5	231-105-1	
- Nickel 3.5%	7440-02-0	231-111-4	
- Silicone 0.75%	7440-21-3	231-130-8	
- Carbon 0.15%	7440-44-0	231-153-3	
- Phosphorus 0.06%	7723-14-0	231-768-7	
- Sulfur 0.03%	7704-34-9	231-722-6	
5. Silicone	7440-21-3	231-130-8	0,18%

The following substances and materials are intended to come into contact with food.

Chemical Name	CAS	EINECS
Bamboo - Phyllostachys edulis	-	-
Polypropylene (PP)	9003-07-0	618-352-4
Stainless Steel 304		
- Iron 71.095%	7439-89-6	231-096-4
- Chromium 18%	7440-47-3	231-157-5
- Nickel 8%	7440-02-0	231-111-4
- Manganese 2%	7439-96-5	231-105-1
- Silicone 0.75%	7440-21-3	231-130-8
- Carbon 0.08%	7440-44-0	231-153-3
- Phosphorus 0.045%	7723-14-0	231-768-7
- Sulfur 0.03%	7704-34-9	231-722-6
Silicone	7440-21-3	231-130-8



COMPLIANCE

The manufacturer declares that the mentioned product complies with all relevant provisions of

Regulation (EC) No 1935/2004 - Materials and articles intended to come into contact with food*

Regulation (EU) No 10/2011 - Plastic materials and articles intended to come into contact with food*

Regulation (EC) No 2023/2006 - GMP for materials and articles intended to come into contact with food*

* Inclusive subsequent amendments

In conjunction with following harmonized standards

EN 1186-1:2002; EN 1186-3:2002; EN 1122:2001; EN 13130-1:2004; EN14372:2004

Conditions of use:

- Type(s) of food intended to come into contact with the material:

Bottle Suitable for hot and cold drinks / **Lunchbox** Suitable for all kinds of food

- Time and temperature and storage while in contact with food:

Bottle maximum 2 hours (can keep hot for 6 hours) / **Lunchbox** maximum 2 hours

- **Temperature: 0oC – 70oC** (for both **Bottle** and **Lunchbox**)

- Ratio of food contact surface area to volume used: **6dm²/l**

Substances, which are subject to “DUAL-USE” additives in materials or “PURITY CRITERIA”.

- No dual use additives were used in the manufacture of this product

- There are no substances subject to purity criteria

Information about the compliance of substances used are subject to any restriction or specification

- This product is in compliance with overall and Specific Migration Limits (SML's) standard testing conditions laid down in Regulation (EU) 10/2011. Additional information including test reports can be provided on request.

Functional barrier

There is no function barrier present.

Signed for and on behalf of:

Ede (NL)

Place of issue

01-01-2026

Date of issue



R.M. Sillessen
General Manager
solo midocean